

-The Lexington Club Plat No. 2-

-A Part Of Hamilton Place, A Planned Unit Development, Lying In Section 21, Township 46 South, Range 42 East-
 Being A Replat Of A Part Of "The Lexington Club", (P. B. 57 Pp. 92-99) Public Records, Palm Beach County, Florida.
 July, A. D., Nineteen Hundred Eighty Seven

Sheet 4 Of 6

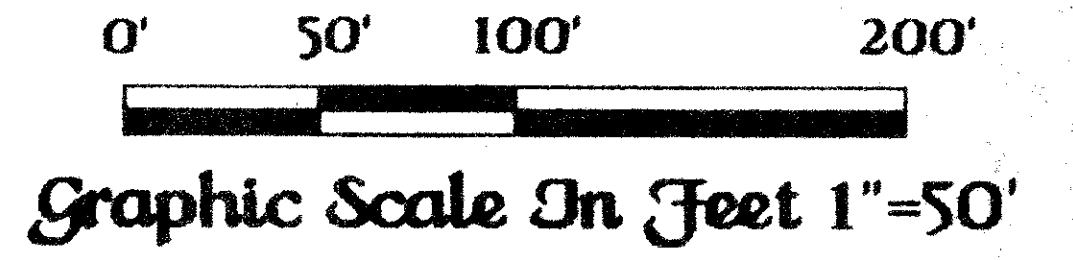
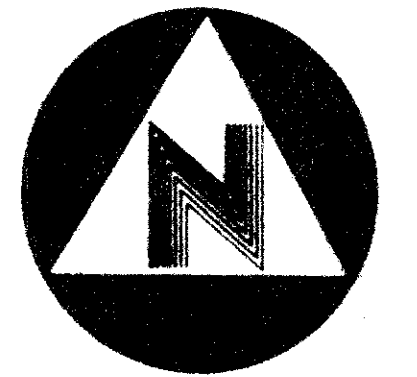
21

State of Florida)
 County of Palm Beach)

This Plat was filed for record
 at _____ this _____ day of
 _____ A. D., 1987, and
 duly recorded in Plat Book
 _____ on Pages _____ thru _____

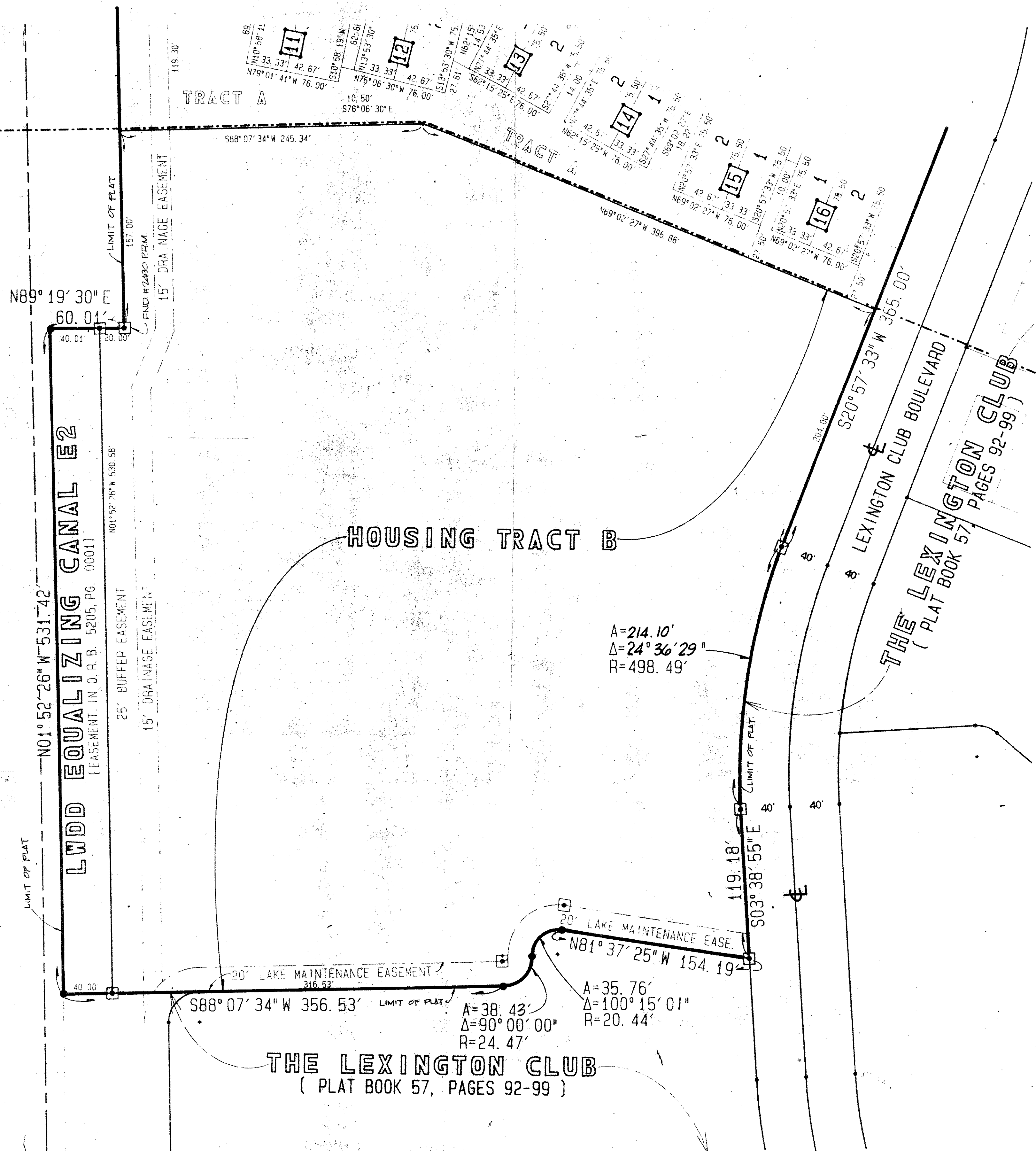
John B. Dunkle,
 Clerk of the Circuit Court.

By: _____
 Deputy Clerk

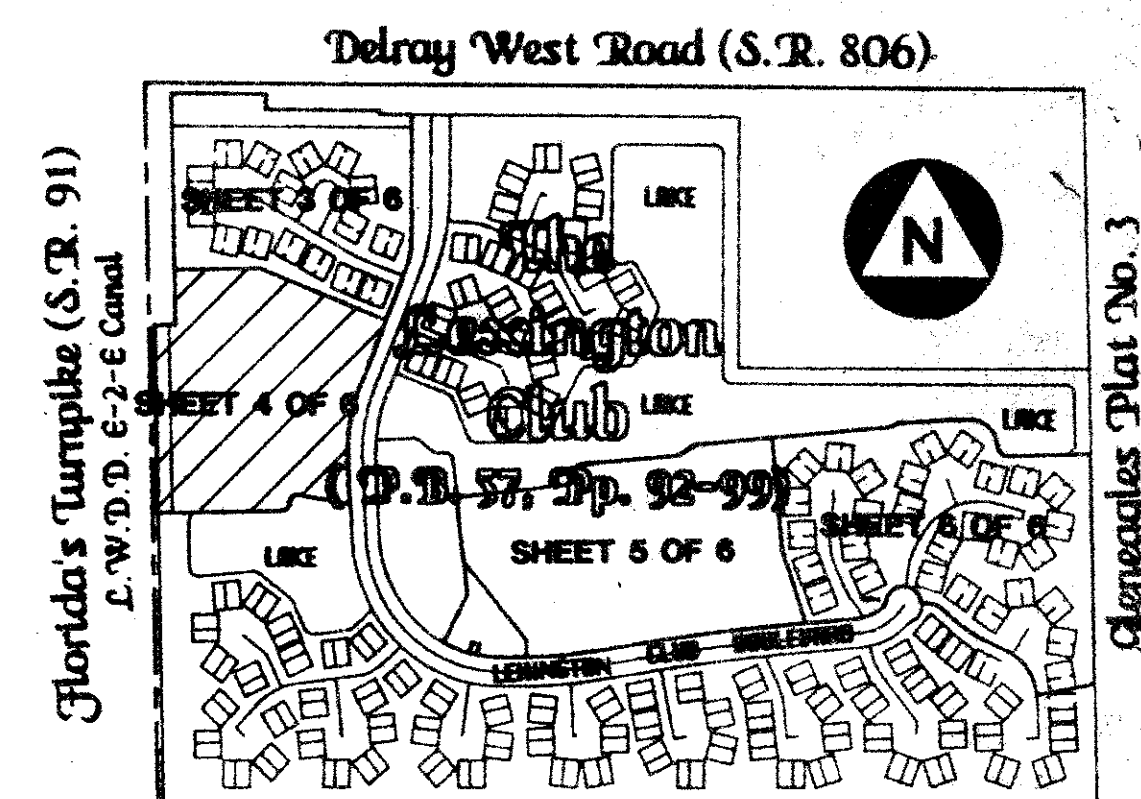


Match Line
 (See Sheet 3 Of 6)

Match Line
 (See Sheet 3 Of 6)



2154
 RS 33446
 TAZ 468
 SUBDIVISION #
 BOOK
 FLOOD ZONE
 QUAD # 57
 SE PUD 86-6
 PUD NAME



Genealog Plat No. 3
 -Location Map-
 (Key Map)
 Not To Scale

This instrument was prepared by Wm. R. Van Campen, R.L.S., in and for the offices of Bench Mark Land Surveying & Mapping, Inc., 4152 West Blue Heron Boulevard, Suite 121, Riviera Beach, FL, 33404

BENCH MARK
 LAND SURVEYING & MAPPING, INC.
 4152 WEST BLUE HERON BOULEVARD, SUITE 121, RIVIERA BEACH, FL 33404
 (407) 881-1111

-Record Plat-
The Lexington Club Plat No. 2

OWN: _____ CKD: _____ DATE: _____ WD NO: _____
 RECD: _____ SIZE: _____ SR: _____ NUMBER: _____ OF 6

59/21